

Graduate Student Survey at University of Missouri, 2002

Table of Contents

◆

◆

Table 1: Comparison of GSS 2002 Respondents and Population

	<u>GSS 2002</u>	<u>Population</u>	<u>GSS 2002</u>	<u>Population</u>	<u>GSS 2002</u>	<u>Population</u>	<u>GSS 2002</u>	<u>Population</u>	<u>GSS 2002</u>	<u>Population</u>
	<u>UMC</u>		<u>UMKC</u>		<u>UMR</u>		<u>UMSL</u>			
<u>Program</u>										
Masters	50%	46%	69%	59%	60%	73%	69%	80%	57%	59%
Doctors	50%	54%	31%	41%	40%	27%	31%	20%	43%	41%
<u>Ethnicity</u>										
Afr.+Am.Ind.	5%	6%	6%	11%	3%	4%	8%	12%	5%	9%
Asian	12%	3%	18%	7%	40%	4%	8%	3%	16%	4%
White	83%	91%	77%	82%	58%	92%	84%	85%	78%	87%
<u>Citizenship</u>										
U.S.&PR	70%	81%	70%	88%	31%	48%	83%	91%	65%	83%
International	30%	19%	30%	12%	69%	52%	17%	9%	35%	17%

Note: GSS 2002 population is defined as all graduate students enrolled in the Fall of 2001.

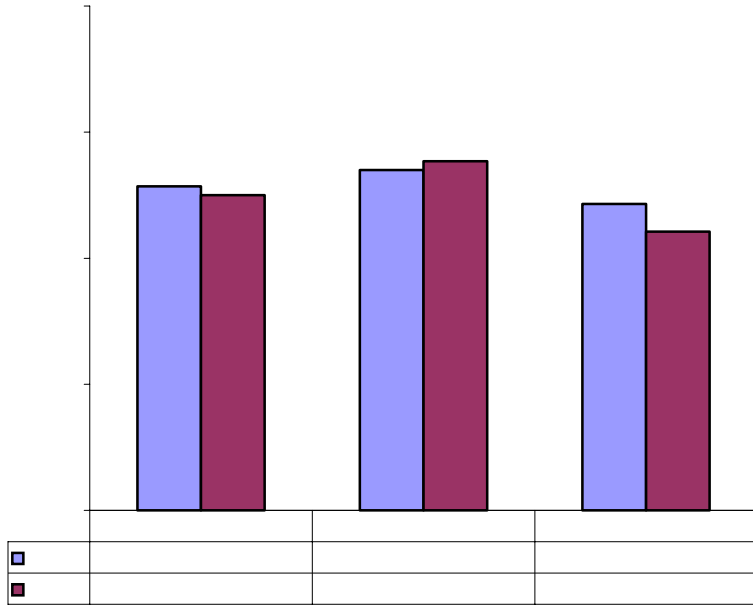
Source: http://www.system.missouri.edu/planning/exec_ref/1_21.xls

IR&P/MW 08/02

UMC UMKC UMR UMSL UM UMC UMKC UMR UMSL UM

	3,208	2,411	892	566	6,263
	21	6	36	103	166
	3,187	2,405	856	463	6,097

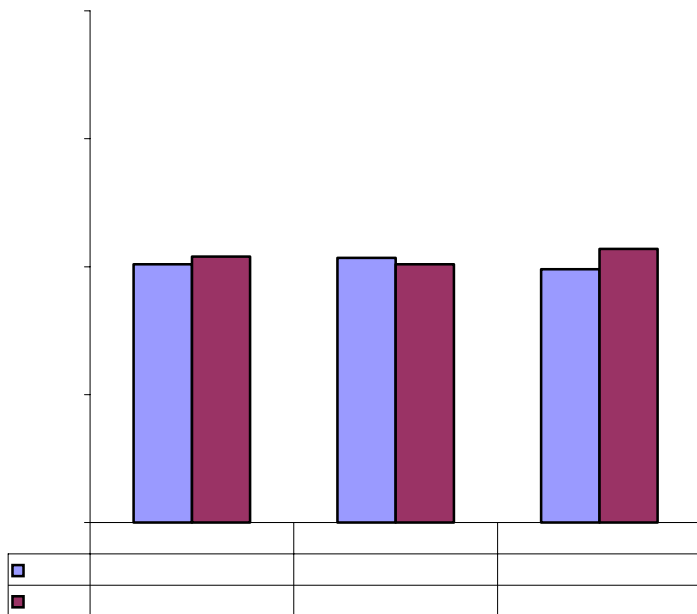
Student Interaction with Faculty: UM & UMSL



Student Interactions with Faculty Items:

Blank area for notes or data related to Student Interactions with Faculty Items.

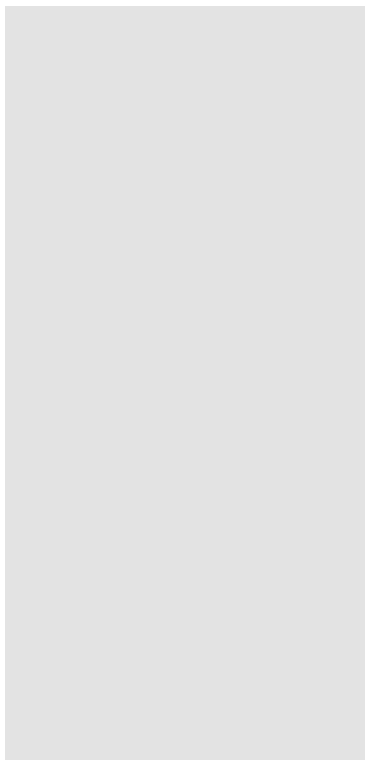
Enriching Learning Experiences: UM & UMSL



Enriching Learning Experiences Items:

Blank area for notes or data related to Enriching Learning Experiences Items.

**Supportive Campus
Environment Items:**



VII: GSS 2002 Benchmarks by Demographic Variables: UM and UMSL

		<u>Academic Challenge</u>	<u>Active Learning</u>	<u>Interact w/ Faculty</u>	<u>Enrich Learn</u>	<u>Support</u>	<u>Career Prep</u>	<u>Academic Develop</u>	<u>Personal Develop</u>	<u>Overall Develop</u>	<u>Satis- faction</u>
<u>Program</u>											
<i>Doctoral</i>	UM	3.88	3.22	3.43	2.98	3.41	3.01	3.86	3.88	3.88	3.47
	UMSL	4.08	3.6	3.77	3.02	3.34	3.22	3.89	4	3.88	3.5
<i>Master's</i>	UM	3.7	3.22	3.43	2.98	3.41	3.01	3.74	3.88	3.77	3.47
	UMSL	3.73	3.04	3.21	3.14	3.35	3.01	3.81	3.88	3.82	3.53
<u>Gender</u>											
<i>Male</i>	UM	3.67	3.24	3.58	2.99	3.39	3.06	3.79	3.91	3.81	3.49
	UMSL	3.75	3.3	3.62	3.26	3.49	3.03	3.88	3.97	3.87	3.57
<i>Femal</i>	UM	3.9	3.29	3.56	3.07	3.41	3.07	3.79	3.94	3.82	3.45
	UMSL	3.88	3.22	3.44	3.02	3.29	3.13	3.81	3.88	3.81	3.5
<u>Ethnicity</u>											
<i>Afr Am Ind Hisp</i>	UM	3.98	3.46	3.67	3.35	3.43	3.03	3.88	3.98	3.86	3.62
	UMSL	4.03	3.37	3.73	3.71	3.54	3.05	3.91	4.08	3.94	3.78
<i>Asian</i>	UM	3.42	2.91	3.33	2.71	3.24	2.91	3.7	3.92	3.77	3.42
	UMSL	3.53	2.79	3.45	2.82	3.54	2.97	4.03	4.13	4.05	3.6
<i>White</i>	UM	3.93	3.43	3.61	3.22	3.46	3.09	3.82	3.91	3.82	3.47
	UMSL	3.87	3.27	3.55	3.1	3.34	3.13	3.8	3.88	3.79	3.5
<u>Full-Time St.</u>											
<i>Full-Time</i>	UM	3.76	3.25	3.58	3	3.41	3.06	3.79	3.95	3.83	3.45
	UMSL	3.82	3.32	3.54	2.96	3.31	3.08	3.86	3.98	3.87	3.44
<i>Part-time</i>	UM	3.92	3.32	3.51	3.26	3.37	3.06	3.79	3.82	3.76	3.58
	UMSL	3.84	3.09	3.39	3.37	3.41	3.13	3.8	3.8	3.77	3.63
<u>Citizenship</u>											
<i>U.S.</i>	UM	3.94	3.44	3.59	3.2	3.42	3.09	3.81	3.9	3.81	3.46
	UMSL	3.89	3.28	3.57	3.16	3.34	3.14	3.86	3.91	3.86	3.51
<i>Non U.S.</i>	UM	3.49	2.99	3.54	2.8	3.36	3.02	3.76	3.97	3.83	3.5
	UMSL	3.57	3.1	3.34	2.83	3.41	2.91	3.82	3.92	3.82	3.56

VII: GSS 2002 Benchmarks by Demographic Variables: UM and UMSL

		<u>Academic Challenge</u>	<u>Active Learning</u>	<u>Interact w/ Faculty</u>	<u>Enrich Learn</u>	<u>Support</u>	<u>Career Prep</u>	<u>Academic Develop</u>	<u>Personal Develop</u>	<u>Overall Develop</u>	<u>Satis- faction</u>
<u>Career Aspiration</u>											
<u>Government</u>	UM	3.91	3.21	3.61	3	3.44	3.07	3.88	3.94	3.86	3.49
	UMSL	4.08	3.17	4.5	2.61	3.38	3.04	3.9	3.88	3.78	3.6
<u>Hi Ed Admin</u>	UM	3.91	3.4	3.48	3.13	3.43	2.96	3.82	3.94	3.83	3.62
	UMSL	4.42	3.25	3.76	n<5	3.81	n<5	3.9	4	4	3.76
<u>Hi Ed Faculty</u>	UM	3.96	3.32	3.75	3.14	3.41	3.09	3.87	4.01	3.89	3.47
	UMSL	3.96	3.33	3.85	3.03	3.35	3.16	3.84	3.94	3.85	3.47
<u>Industry/Research</u>	UM	3.58	3.15	3.48	2.87	3.33	3.04	3.77	3.91	3.81	3.49
	UMSL	3.74	3.31	3.31	3.58	3.26	3.05	3.79	3.92	3.8	3.6
<u>Post Doc</u>	UM	3.76	3.18	3.59	2.89	3.34	3.18	3.81	3.96	3.83	3.48
	UMSL	3.36	3.07	3.37	2.47	2.97	3	3.63	3.78	3.63	3.3
<u>Status in Program</u>											
<u>Taking Courses</u>	UM	3.78	3.23	3.52	3.01	3.41	3.06	3.77	3.88	3.78	3.47
	UMSL	3.8	3.09	3.35	3.07	3.36	3.04	3.81	3.83	3.8	3.51
<u>Completed Courses</u>	UM	3.72	3.3	3.53	2.97	3.4	3.08	3.76	3.9	3.79	3.48
	UMSL	3.91	3.24	3.92	2.83	3.46	3.32	3.84	4.03	3.84	3.58
<u>Passed Qualify</u>	UM	3.78	3.23	3.56	3.01	3.35	3.06	3.8	3.97	3.83	3.46
	UMSL	3.84	3.57	3.6	3.19	3.32	3.17	3.85	4.02	3.88	3.61
<u>Proposal Accepted</u>	UM	3.86	3.37	3.71	3.15	3.43	3.07	3.9	4.08	3.94	3.49
	UMSL	4	3.82	3.78	3.28	3.18	3.05	3.96	4.1	3.94	3.27

VIII: GSS 2002 Mean and Standard Deviation

	Doctoral Students				Master's Students			
	UMSL		UM		UMSL		UM	
	Mean	Std	Mean	Std	Mean	Std	Mean	Std
28 Learned more than I thought	3.28	0.72	3.30	0.78	3.14	0.89	3.17	0.84
29 Enhanced ability to apply theories	4.36	0.60	4.18	0.73	4.02	0.87	3.98	0.81
30 Comfortable using tech in my field	4.18	0.78	4.14	0.79	4.33	0.76	4.14	0.78
31 Oral and written skills improved	4.11	0.76	4.14	0.81	3.92	0.82	3.91	0.92
32 Teaching to be my career	4.10	0.98	3.99	0.99	3.49	1.25	3.37	1.16
33 Teaching is requirement of my program	3.28	1.33	3.29	1.24	2.75	1.27	2.74	1.19
34 Professional skills improved	4.01	0.78	4.12	0.80	3.89	0.85	3.87	0.89
35 Working w/others	3.72	0.82	3.75	0.87	3.68	0.92	3.75	0.90
36 Ability to learn on my own	4.27	0.84	4.21	0.79	4.08	0.92	4.05	0.86
37 Making decisions on ethics	3.89	0.93	3.90	0.89	3.90	0.92	3.85	0.91
38 Take longer to complete degree	3.04	1.13	3.35	1.17	2.82	1.22	2.82	1.23
39 Computing support is adequate	3.48	1.21	3.58	1.09	3.75	0.89	3.54	1.04
40 Deadlines are clearly communicated	3.56	1.15	3.54	1.07	3.68	1.02	3.66	1.02
41 Support resources are adequate	3.11	1.17	3.18	1.20	3.44	1.04	3.27	1.10
42 Library support adequate	3.44	1.29	3.66	1.13	3.77	0.91	3.76	1.00

poor	1	1%	15	1%	5	3%	33	2%
	80	100%	1,030	100%	174	100%	1,349	100%
excellent	34	43%	384	37%	46	26%	360	27%
very good	35	44%	374	36%	73	42%	506	38%
good	10	13%	199	19%	41	24%	351	26%
fair	1	1%	61	6%	12	7%	115	9%
poor	0	0%	11	1%	2	1%	17	1%
	80	100%	1,029	100%	174	100%	1,349	100%
excellent	22	28%	242	24%	25	14%	225	17%
very good	37	46%	436	43%	86	49%	583	43%
good	19	24%	259	25%	45	26%	365	27%

IX: GSS 2002 Frequency Distributions

	Doctoral Students				Master's Students			
	UMSL		UM		UMSL		UM	
	Count	Col%	Count	Col%	Count	Col%	Count	Col%
excellent	31	39%	306	30%	34	20%	285	21%
very good	22	28%	326	32%	55	32%	421	31%
good	17	22%	231	22%	52	30%	383	28%
fair	8	10%	135	13%	23	13%	206	15%
poor	1	1%	29	3%	10	6%	54	4%
	79	100%	1,027	100%	174	100%	1,349	100%
excellent	22	32%	304	35%	10	18%	161	22%
very good	21	30%	239	27%	10	18%	199	27%
good	14	20%	185	21%	15	27%	205	28%
fair	9	13%	96	11%	11	20%	106	14%
poor	3	4%	51	6%	10	18%	68	9%
	69	100%	875	100%	56	100%	739	100%
excellent	17	22%	282	28%	17	10%	194	15%
very good	26	34%	303	30%	33	20%	333	25%
good	18	23%	229	22%	56	33%	399	30%
fair	11	14%	138	14%	31	18%	250	19%
poor	5	6%	69	7%	32	19%	149	11%
	77	100%	1,021	100%	169	100%	1,325	100%
excellent	17	21%	216	21%	27	16%	175	13%
very good	33	41%	362	35%	55	32%	451	34%
good	23	29%	280	27%	61	35%	433	32%
fair	3	4%	113	11%	21	12%	214	16%
poor	4	5%	58	6%	10	6%	73	5%
	80	100%	1,029	100%	174	100%	1,346	100%
excellent	8	17%	105	16%	20	24%	156	19%
very good	16	34%	163	25%	25	30%	199	24%
good	17	36%	186	29%	19	23%	174	21%
fair	2	4%	93	15%	6	7%	118	14%
poor	4	9%	93	15%	14	17%	171	21%
	47	100%	640	100%	84	100%	818	100%
excellent	17	22%	165	17%	39	24%	235	19%
very good	25	33%	221	23%	47	28%	351	28%
good	24	32%	292	31%	42	25%	357	28%
fair	7	9%	175	18%	23	14%	199	16%
poor	3	4%	103	11%	14	8%	119	9%
	76	100%	956	100%	165	100%	1,261	100%
excellent	3	7%	55	7%	13	14%	72	8%
very good								

e2cellent

IX: GSS 2002 Frequency Distributions

			Doctoral Students				Master's Students			
			UMSL		UM		UMSL		UM	
			Count	Col%	Count	Col%	Count	Col%	Count	Col%
17	Engage in interdisciplinary work	excellent	6	9%	118	13%	15	12%	95	9%
		very good	11	17%	199	21%	25	20%	216	19%
		good	30	45%	294	32%	36	29%	381	34%
		fair	8	12%	212	23%	31	25%	273	25%
		poor	11	17%	107	12%	18	14%	144	13%
	Total	66	100%	930	100%	125	100%	1,109	100%	
18	Co-curricular activities	excellent	6	11%	114	13%	8	7%	87	8%
		very good	10	18%	223	25%	22	18%	263	24%
		good	19	35%	311	36%	31	25%	377	35%
		fair	11	20%	156	18%	33	27%	226	21%
		poor	9	16%	72	8%	28	23%	137	13%
	Total	55	100%	876	100%	122	100%	1,090	100%	
19	Support academically	excellent	3	4%	140	14%	23	13%	165	12%
		very good	38	48%	352	34%	59	34%	480	36%
		good	24	30%	332	32%	62	36%	462	35%
		fair	9	11%	151	15%	21	12%	166	12%
		poor	6	8%	53	5%	8	5%	63	5%
	Total	80	100%	1,028	100%	173	100%	1,336	100%	
20	Support socially	excellent	3	4%	82	8%	11	6%	118	9%
		very good	13	17%	231	23%	25	14%	304	23%
		good	32	42%	363	36%	69	40%	508	38%
		fair	16	21%	250	24%	49	28%	292	22%
		poor	13	17%	95	9%	19	11%	113	8%
	Total	77	100%	1,021	100%	173	100%	1,335	100%	
21	Relationship w/ admin. Personnel	excellent	9	11%	172	17%	31	18%	211	16%
		very good	24	30%	331	32%	48	28%	423	32%
		good	30	38%	322	31%	55	32%	441	33%
		fair	12	15%	159	15%	30	17%	208	16%
		poor	4	5%	44	4%	8	5%	54	4%
	Total	79	100%	1,028	100%	172	100%	1,337	100%	
22	Relationship w/ students	excellent	28	35%	264	26%	44	26%	317	24%
		very good	34	43%	401	39%	69	40%	558	42%
		good	17	22%	290	28%	47	27%	368	28%
		fair	0	0%	59	6%	10	6%	75	6%
		poor	0	0%	13	1%	1	1%	16	1%
	Total	79	100%	1,027	100%	171	100%	1,334	100%	
23	Advice about career options in Hi Ed	excellent	8	13%	118	13%	12	9%	98	9%
		very good	15	24%	231	26%	32	25%	244	22%
		good	26	41%	292	33%	30	23%	328	30%
		fair	10	16%	163	18%	29	23%	266	24%
		poor	4	6%	94	10%	25	20%	172	16%
	Total	63	100%	898	100%	128	100%	1,108	100%	
24	Advice about career options outside Hi Ed	excellent	3	5%	43	5%	12	10%	87	8%
		very good	11	19%	161	19%	18	15%	225	20%
		good	22	39%	235	27%	33	27%	336	30%
		fair	13	23%	228	27%	34	28%	268	24%
		poor	8	14%	188	22%	26	21%	210	19%
	Total	57	100%	855	100%	123	100%	1,126	100%	

IX: GSS 2002 Frequency Distributions

	Doctoral Students				Master's Students			
	UMSL		UM		UMSL		UM	
	Count	Col%	Count	Col%	Count	Col%	Count	Col%
excellent	14	18%	166	16%	23	13%	167	13%
very good	38	49%	382	37%	62	36%	440	33%
good	20	26%	314	31%	52	30%	492	37%
fair	6	8%	123	12%	23	13%	181	14%

IX: GSS 2002 Frequency Distributions

	Doctoral Students				Master's Students			
	UMSL		UM		UMSL		UM	
	Count	Col%	Count	Col%	Count	Col%	Count	Col%
largest source	1	3%	105	2%	47	51%	254	4%
2nd largest src.	5	16%	56	1%	6	7%	111	2%
3rd largest src.	13	41%	92	2%	11	12%	121	2%
4th largest src.	4	13%	57	1%	6	7%	54	1%
5th largest src.	2	6%	36	1%	5	5%	48	1%
6th largest src.	7	22%	130	2%	17	18%	150	2%
	32	100%	5,216	100%	92	100%	6,115	100%
largest source	10	50%	60	1%	38	41%	163	2%
2nd largest src.	4	20%	26	0%	14	15%	61	1%
3rd largest src.	2	10%	35	1%	11	12%	47	1%
4th largest src.	1	5%	23	0%	7	8%	50	1%
5th largest src.	1	5%	24	0%	1	1%	31	0%
6th largest src.	2	10%	119	2%	22	24%	194	3%
	20	100%	5,503	100%	93	100%	6,661	100%
largest source	11	28%	90	1%	25	23%	199	3%
2nd largest src.	8	20%	104	2%	27	25%	179	2%
3rd largest src.	8	20%	132	2%	21	19%	160	2%
4th largest src.	10	25%	109	2%	12	11%	116	2%
5th largest src.	3	1	0		2	5	%	1

X. Reference

XI. Survey Questionnaire:

University of Missouri Graduate Student Survey Winter 2002

Please complete by April 19, 2002

Learning Environment

*Directions: In this first part of the survey, we want to ask about the **learning environment** in your graduate program. When you answer, please consider your complete experience as a University of Missouri graduate student, rather than only a particular semester or year. Please read each item and select the one response, which best describes your graduate program.*

Level of Academic Challenge

Student Interactions with Faculty

Enriching Learning Experiences

Supportive Campus Environment

Career Preparation

Directions: In this part of the survey, we want to ask about career preparation in your entire University of Missouri graduate program experience rather than one particular semester or year. Please read each statement and select the one response which best describes your program.

Academic and Personal Development

Directions: In this part of the survey, we want to ask about academic and personal development over the entire length of your University of Missouri graduate program rather than one particular semester or year. Please read each statement and select the

Satisfaction with University Experience

Directions: In this part of the survey, we want to ask about your university experience in your entire University of Missouri graduate program rather than one particular semester or year. Please read each statement and select one response, which best describes your agreement with the statement.

Financial

