



TABLE OF CONTENTS

	PAGE
Budget Introduction and Overview.....	1
Statistical Highlights.....	3
All Funds Budget Summary.....	5
Current Funds Budget Summary	6
Operations Fund Budget Summary.....	7
Auxiliary Enterprises Fund Budget Summary.....	8

University of Missouri System FY2015 Budget

Introduction and Overview

The University of Missouri System Operating Budget Book presents summary information on total University of Missouri System revenue

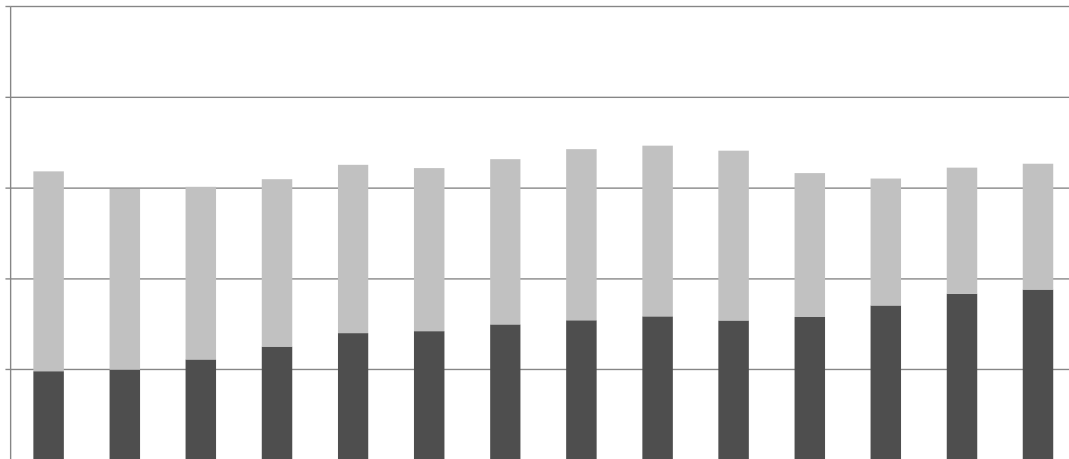
market and equity adjustments consistent with the campus's faculty and staff recruitment and retention strategy as well as their position relative to their peers.

6 D O D Q G Z E X J G I L Q W U H Y D V H E V G P S I X J R P L Q F U H O V K H H
V D O D U \ D E Q G V Z D J H

Campuses: Columbia, Kansas City, Missouri S&T, and St. Louis

Enrollment, Fall 2014	<u>Head Count</u>	<u>FTE</u>
MU	35,425	30,531
UM-Kansas City	16,146	11,552

UNIVERSITY OF MISSOURI SYSTEM
Statistical Highlights



Since FY2001, state appropriations per FTE student have declined while net tuition and fees per FTE student have increased. However, the combined total has remained basically flat. Adjusted for inflation, the combined total funding per FTE student has actually fallen 30%, or \$4,979 per FTE student, as compared to FY2001.

Degrees & Certificates Awarded, FY2014

Undergraduate Certificate	23
Bachelors	10,733
Graduate Certificate	740
First Professional	837
Masters	4,013
Education Specialist	113
Doctorate	640
Total Degrees & Certificates	17,099

Faculty and Staff headcount (Fall 2014 estimate)

Total faculty, Fall 2014 (67 percent full-time, 33 percent part-time)	5,916
Total Staff, Fall 2014 (76 percent full-time, 24 percent part-time)	18,152
Total faculty and staff	24,068

Fund	Definition	Amount
Operations	The Operations fund is where the majority of the University's instructional and pu service activities are budgeted and accounted for. It is funded primarily by tuition and fees and state appropriations for operations.	189,442,767
Other Unrestricted	Other Unrestricted funds are comprised of Service Operations, Continuing Education and Self Insurance Funds. Service Operations provide services to departments or other organizational units within the University. Continuing Education provides the campus course offerings outside of the normal time, space, and campus location. Self Insurance Funds include medical benefits, dental benefits, educators' legal liability, medical malpractice, directors' liability, and other insurance.	1,399,125,236

UNIVERSITY OF MISSOURI SYSTEM

	FY13 Actual	FY14 Actual	FY15 Budget
Beginning Net Assets	1,157,500,104	1,146,209,404	1,075,616,868
Revenues	2,771,412,787	2,917,336,809	2,905,861,770
Compensation	1,729,739,247	1,709,750,509	1,784,685,046
Other Expenses	783,118,687	841,185,057	831,132,669
Expenditures	2,512,857,934	2,550,935,566	2,615,817,715
Transfers	(269,845,553)	(222,212,672)	(209,596,732)
Change in Net Assets	(11,290,700)	144,188,571	80,447,323
Effect of Change in Accounting Principle		(502,374,284)	
Change in Net Assets, as Adjusted		(358,185,713)	
Ending Net Assets	1,146,209,404	788,023,692	1,156,064,190

* Accounting change to comply with GASB67 and 68 related to reporting of university pension plan

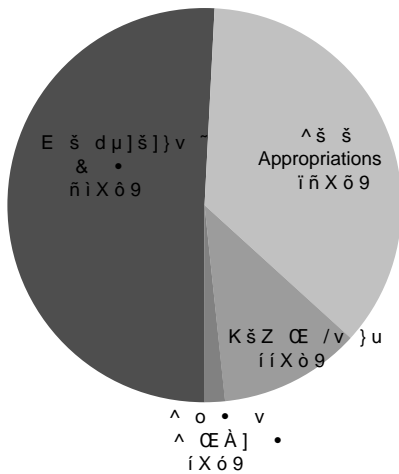
UNIVERSITY OF MISSOURI SYSTEM

&]• o z Œ îîñ K% Œ š}}v• &µv µ P š ^µuu Œ(

	FY13 Actual	FY14 Actual	FY15 Budget
Beginning Net Assets	469,407,659	471,562,924	408,551,489
Revenues	1,112,056,665	1,177,112,005	1,189,442,767
Compensation	869,804,094	910,052,746	902,466,778
Other Expenses	223,432,155	246,195,305	255,482,230
Expenditures	1,093,236,249	1,156,248,051	1,157,949,009
Transfers	(16,665,151)	(41,165,514)	(12,819,290)
Change in Net Assets	2,155,265	(20,301,561)	18,674,468
Ending Net Assets	471,562,924	451,261,363	427,225,958

FY15 Operations Fund Revenues:

\$1.19 Billion p.768 à 49.793.65 A.617829.576.550 c64.52114605 Tw 61.3d [51E>-20-5707953 0.314 0.302 scn 0



Operations Fund Key Points

{ &µv %œ]u œ]oç ~òòXó9• Ç v š šµ]š}}v ~ (• v •š š %œœ}œœ] š}}
 { }u%œ v• š}}v]• óóXó9 }(Æ%œ v• •X
 { ñóXî9 }(Æ%œ v• • }v %œœ]u œç %œœ}Pœ u• }(/v•šœµ š}}vU Z • œ ZU v
 { dœ v•(œ• œ %œœ]u œ]oç š } šZ %œœ vš (µv X

UNIVERSITY OF MISSOURI SYSTEM
Fiscal Year 2015 Auxiliary Enterprises Fund Budget Summary

	FY13 Actual	FY14 Actual	FY15 Budget
Beginning Net Assets	38,491,641	30,912,869	77,744,962
Revenues	541,828,791	536,514,774	578,881,924
Compensation	287,160,667	288,273,589	318,463,294
Other Expenses	194,252,045	187,535,841	195,713,710
Expenditures	481,412,713	475,809,430	514,177,004
Transfers*	(67,994,850)	(59,129,252)	(59,351,355)
Change in Net Assets	<u>(7,578,772)</u>	<u>1,576,092</u>	<u>5,353,564</u>
Ending Net Assets	<u>30,912,869</u>	<u>32,488,961</u>	<u>83,098,526</u>

* Transfers are primarily to the plant fund for maintenance & repair, capital projects and debt service.

	FY13 Actual	FY14 Actual	FY15 Budget
Beginning Net Assets	338,981,851	309,466,286	338,181,000
Revenues	723,885,848	758,401,693	759,301,171
Compensation	314,395,355	317,329,829	334,218,167
Other Expenses Expenditures	313,809,467	337,128,061	346,484,889

	FY13 Actual	FY14 Actual	FY15 Budget
Instruction	\$623,851,654	\$622,565,191	\$616,975,267
Research	205,976,498	190,292,951	177,593,614
Public Service	148,745,810	145,533,220	144,591,511
Academic Support	139,171,703	139,087,415	154,317,604
Student Services	76,442,347	83,650,566	85,388,547
Institutional Support	100,311,783	122,705,497	121,901,788
Operation and Maintenance of Plant	107,702,769	115,144,285	119,279,630
Total Educational & General	1,402,202,564	1,418,979,125	1,420,047,961
Hospitals	629,242,657	656,147,011	681,592,751
Auxiliaries	481,412,709	475,809,430	514,177,003
Total Expenditures	\$2,512,857,930	\$2,550,935,566	\$2,615,817,715

* Excludes an adjustment of \$502,374,284 due to change in accounting principle

UNIVERSITY OF MISSOURI SYSTEM

	FY13 Actual	FY14 Actual	FY15 Budget
Instruction	\$545,977,688	\$570,734,619	\$552,058,962
Research	59,575,484	63,450,654	57,032,066
Public Service	50,343,603	51,958,838	53,361,807
Academic Support	129,102,746	133,635,985	145,798,438
Student Services	67,379,995	77,226,424	80,221,233
Institutional Support	131,169,177	140,477,824	149,732,007
Operation and Maintenance of Plant	109,687,556	118,763,707	119,744,497
Total Expenditures	\$1,093,236,249	\$1,156,248,051	\$1,157,949,010

† Primary programs include Instruction, Research and Public Service



!

2UJDQLJDWLRQV & RQVROLGDWHG

" \$ # % & ' () * +



!

08 & ROXPELD ([IWHQVLRQ

	"	\$	#	%	"	"	"	(& *)	& *	'	
, 6 # # " *	-02.3421.5	-45	24/2	-2	-2	-2	-2	-2	- 51	-2	-002 5 4 4	-2	-002 5 4 4
	7 2 / 0 4 8	7.10.8		2	2	2	2	2	7 1 104 0 58	753 522 2228	7 0 ..0 50 8	2	7 0 ..0 50 8
" " "	52/11.33/			2	2	2	2	2	5 0. 02	2	5 04 4/	2	5 04 4/
)	2			2	2	2	2	2	2	21 223 31/	21 223 31/	2	21 223 31/
)	2			2	2	2	2	2	2	54 522 222	54 522 222	2	54 522 222
) 9	2			2	2	2	2	2	2	51 140 022	51 140 022	2	51 140 022
#) 9	2			2	2	2	2	2	2	04 5/5 145	04 5/5 145	2	04 5/5 145



-2

-2

-2

-2





!

&

"	\$	#	&	%	"	'	")	+	&	*	'
-2	2	-2	2	-2	2	-2	2	-2	2	-2	2	-2
!	6	#	"	*								





! "" "" !#

	\$	%	&#	(\$	& \$	
()	**	*+, - ,	./ + "01	*+ / +",	* , +	* , +
2						
3 3))	.4 00 "-01	0 4+ / 040	- 5+0 +4	40 /5/ 45	"0 4	.4 00 , 1
6!) ()))	,, "0+	, , " 4-5	.40 5+"1	5 + ,04	. " -0-1	. 55 5//1
\$) (.4 -4 4-, 1	" /, / "+-	.5 "+"1	, 4, 0 5 "	.4 , , 5"41	.5 50- /--1
7 !) &	. " ""1	/ "0 40	.+4 541	- / 0 /	" / 4 "	., " 5/"1
8&\$) (8	+ "4 ""	0 5+ 050	., - , +"1	0 -5- 0 5	.0 5 + "01	, 5 / +



! "" #

	\$	%	&#	(\$	&	\$
()** + *)+ +,,,-,) -./ "") 0/ 0/) 0-. +/) + +00 ,,	
1	%((2	. *- , **.	0 + " +	+ . ""	+ " * + + "0	3 " , - 0 , .4	* + , * "
%(& (& 2(#							



! "" " !#

	\$	%	&#	()	\$	&	\$
0 *							
(+\$ () *		,	,"01	,231 .1/	4,32 115		4,32 115
(+ () * # *	0 " ""	00 1".	1-0	0 2.3	4 " 2125		01. /3
() *	0 " ""	313 %.	2-22	3-. 232	412.- 5		0 "3.
6							
7 (7 * *	/ "1- ./	3. - 1.	3 2 /-	13 0"2 0	401 2.-5		/ " /..
(8(* *	0 0 1-3	0 021 1 .	4 13" 1./5	3-13 110	01" /3.		20 ""
\$ ("1- 313	-10 .1-	3-02 -"	4.-/ 135		

"20.0599976 0623 .92b(90623*.92b 0623692b 06232f Q BT /TT0 6.923 Tf 461.161 570.661 Td (4.-/ .92b 0623 .92b 06232f Q BT /TT0Td (b 29464 887 159 re f Q BT /TT0 6.923 Tf 358.921 570.6





! " !### "\$

%

	Missouri Kidney Program Fund 2010	Missouri Telehealth Network Fund 2015	Spinal Cord Injury Research Fund 2050
REVENUES			
State Appropriations	\$1,697,500	\$437,640	\$952,422
TOTAL REVENUES	1,697,500	437,640	952,422
EXPENDITURES			
Salaries & Wages	229,978	240,160	21,327
Benefit Expenses	72,090	69,247	7,543
Total Compensation	302,069	309,407	28,870
Other Expenses	1,395,431	128,233	923,552
TOTAL EXPENDITURES	1,697,500	437,640	952,422
CHANGE IN NET ASSETS	\$0	\$0	\$0

	State Historical Society Fund 6030
REVENUES	
State Appropriations	\$2,144,529
Other Incomes	542,073
TOTAL REVENUES	2,686,602.35



University of Missouri System

COLUMBIA | KANSAS CITY | ROLLA | ST. LOUIS

Office of Planning and Budget
University of Missouri System

1000 West Nifong,
Woodrail Building 7, Suite 300,
Columbia MO 65203
(573) 882-3400

www.umsystem.edu