

Randy Sade  
Research Analyst

Office of

This report includes graphs and tables of degrees awarded by each campus since FY 2008. The first table provides a summary of degrees by level for each campus, while the second table series gives the number of awards by the colleges of each campus. The \_\_\_\_\_ reflects the number of degrees awarded by academic department. These tables also show the average number of degrees over a 3, 5, & 10-year period and the percent change in FY 2017 that is relative to the 10-year average.

The highlights of the report from the Table 1 series include:

The University of Missouri System awarded 18,426 degrees and certificates, a 12% growth in FY 2017 relative to the 10-year average.

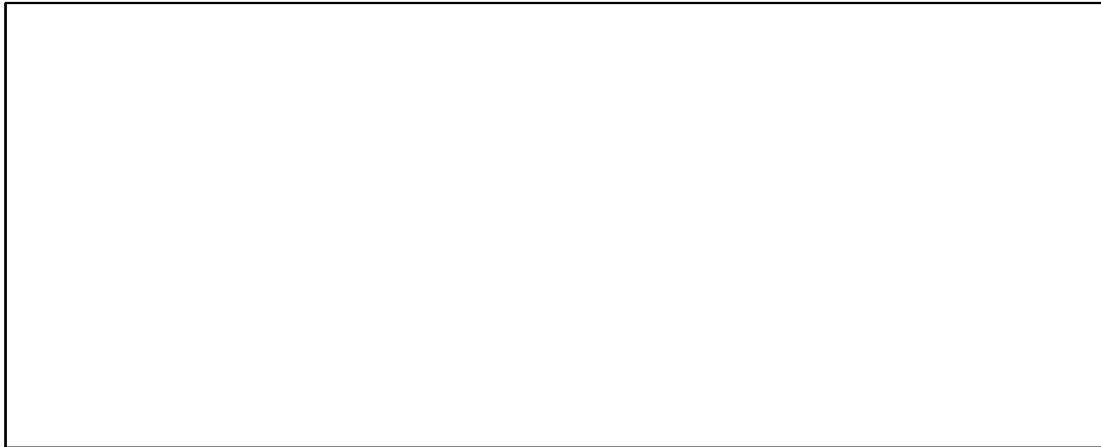
Relative to the 10-year average, the number of FY 2017 doctorate degrees for the University of Missouri System increased 31% and graduate certificates increased 35%.

Comparing FY 2017 degrees to the 10-year averages, the most notable increases are: bachelors degrees awarded are up 15% at UM-Columbia and 18% at Missouri S&T; master degrees are up 8% at UM-Columbia and 14% at Missouri S&T; and doctorates are up 30% at UM-Kansas City, and 57% at Missouri S&T.

First Professional degrees at UM-Kansas City increased 4% when comparing FY 2017 to the 10-year average.

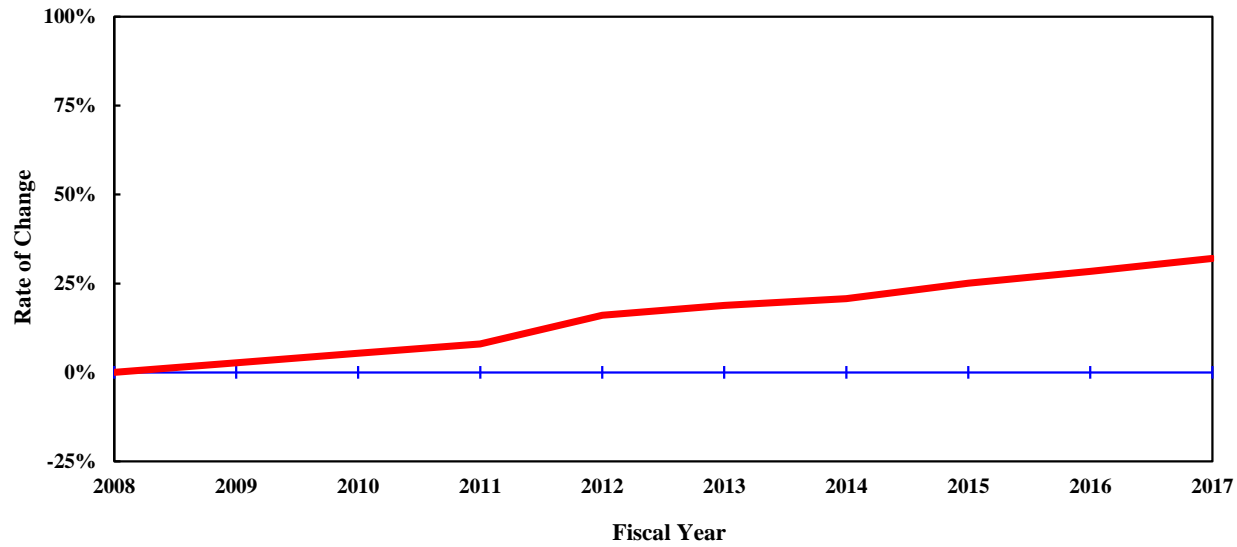
Based on the 10-year averages, Graduate Certificates continues to grow in FY 2017 with a 46

Notes Regarding Use of the Report:



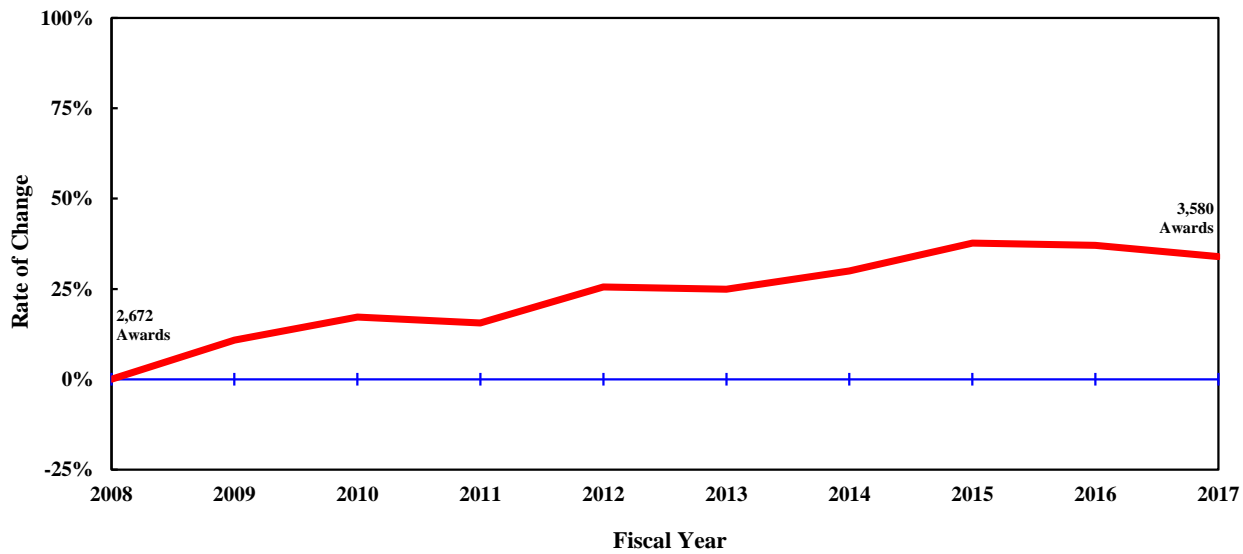
DEGREE	FY 2008	FY 2009	FY 2010	FY 2011	FY 2012	FY 2013	FY 2014	FY 2015	FY 2016	FY 2017	3-Year	<u>Average</u> 5-Year	10-Year	Change in FY17 relative to the 10-Year Avg.
<b>UNIVERSITY OF MISSOURI SYSTEM</b>														
Undergrad. Certificate	3	2	1	4	2	2	23	55	44	56	51.7	36.0	19.2	192%
Bachelors	8,994	9,289	9,604	9,699	10,317	10,543	10,733	11,360	11,654	11,546	11,520.0	11,167.2	10,373.9	11%
Graduate Certificate	321	438	520	539	623	781	740	780	839	869	829.3	801.8	645.0	35%
First Professional	749	763	800	818	790	847	837	876	833	829	846.0	844.4	814.2	2%
Masters	3,432	3,620	3,608	3,870	4,069	3,919	4,013	4,204	4,330	4,217	4,250.3	4,136.6	3,928.2	7%
Education Specialist	102	148	123	100	104	115	113	122	100	93	105.0	108.6	112.0	-17%
Doctorate	510	487	519	557	610	660	640	712	720	816	749.3	709.6	623.1	31%
<b>Total, All Awards</b>	<b>14,111</b>	<b>14,747</b>	<b>15,175</b>	<b>15,587</b>	<b>16,515</b>	<b>16,867</b>	<b>17,099</b>	<b>18,109</b>	<b>18,520</b>	<b>18,426</b>	<b>18,351.7</b>	<b>17,804.2</b>	<b>16,515.6</b>	<b>12%</b>

# UNIVERSITY OF MISSOURI



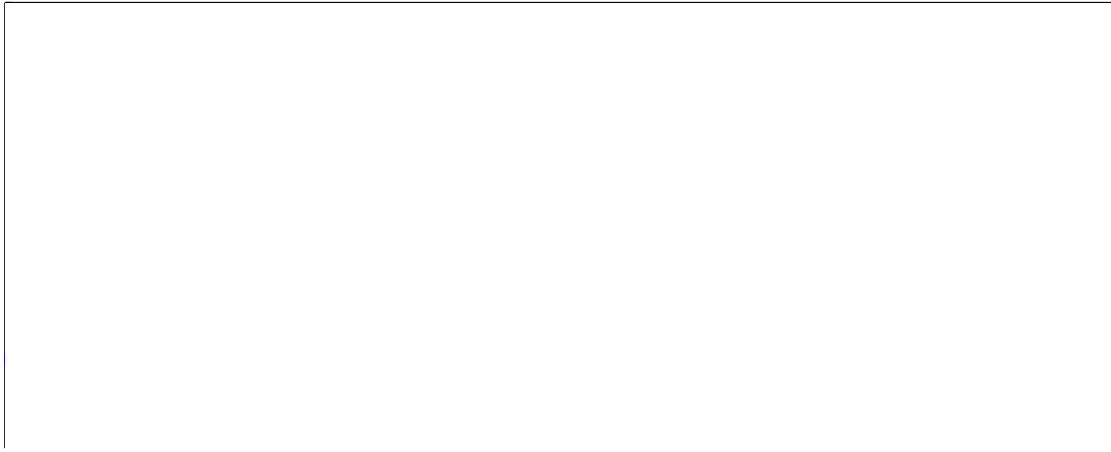
DEGREE	FY 2008	FY 2009	FY 2010	FY 2011	FY 2012	FY 2013	FY 2014	FY 2015	FY 2016	FY 2017	3-Year	<u>Average</u> 5-Year	10-Year	Change in FY17 relative to the 10-Year Avg.
<b>UNIVERSITY OF MISSOURI - COLUMBIA</b>														
Bachelors	4,779	4,855	4,963	5,087	5,528	5,692	5,769	5,995	6,283	6,331	6,203.0	6,014.0	5,528.2	15%
Graduate Certificate	69	88	142	162	179	225	226	239	225	266	243.3	236.2	182.1	46%
First Professional	303	307	304	306	299	332	339	346	308	313	322.3	327.6	315.7	-1%
Masters	1,421	1,506	1,515	1,513	1,631	1,515	1,580	1,571	1,619	1,684	1,624.7	1,593.8	1,555.5	8%
Education Specialist	34	57	59	53	43	63	65	82	51	56	63.0	63.4	56.3	-1%
Doctorate	326	306	322	365	367	411	390	435	416	500	450.3	430.4	383.8	30%
Total, All Awards	6,932	7,119	7,305	7,486	8,047	8,238	8,369	8,668	8,902	9,150	8,906.7	8,665.4	8,021.6	14%

# UNIVERSITY OF MISSOURI - KANSAS CITY



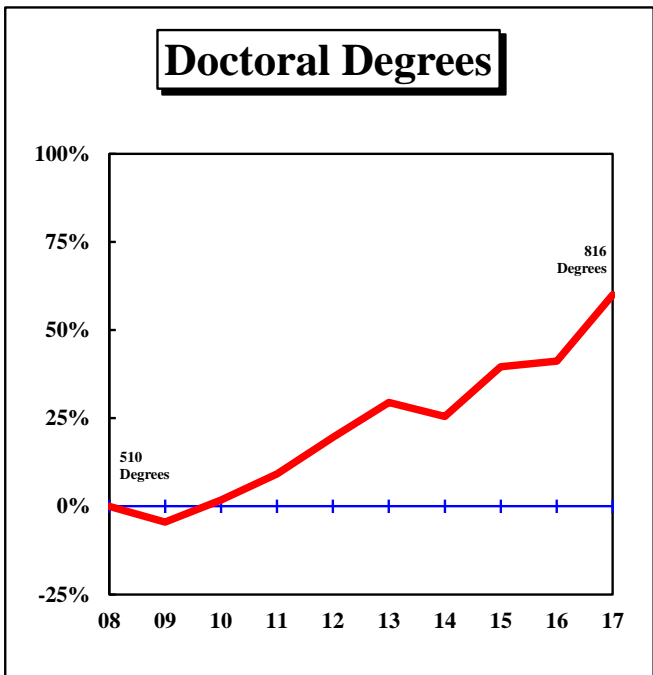
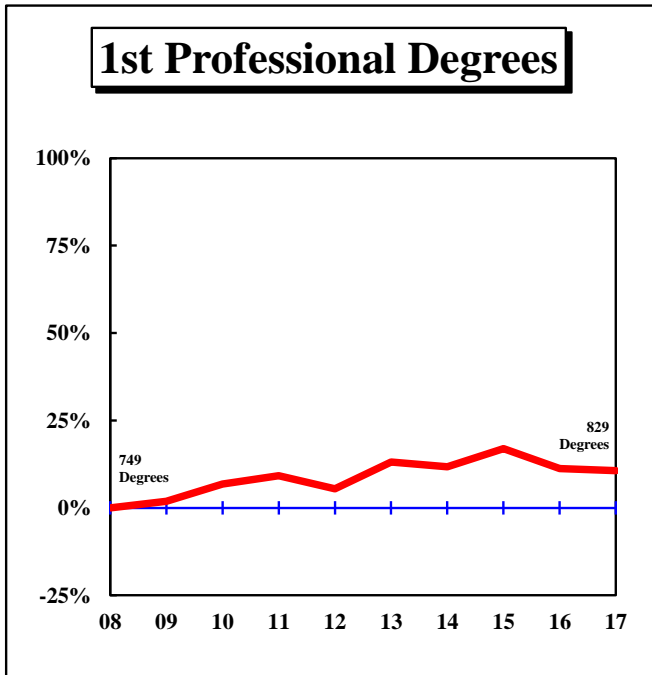
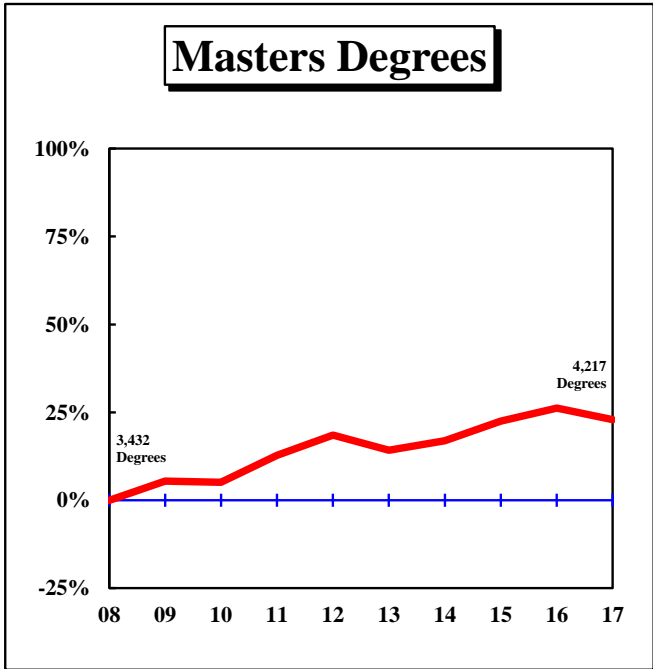
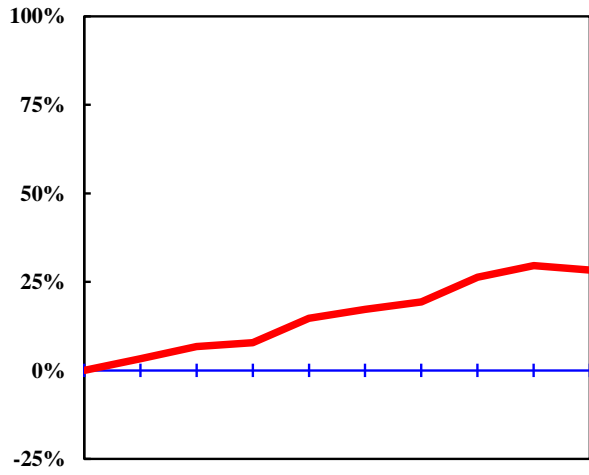
FY FY FY FY FY FY FY FY FY FY

Change in FY17

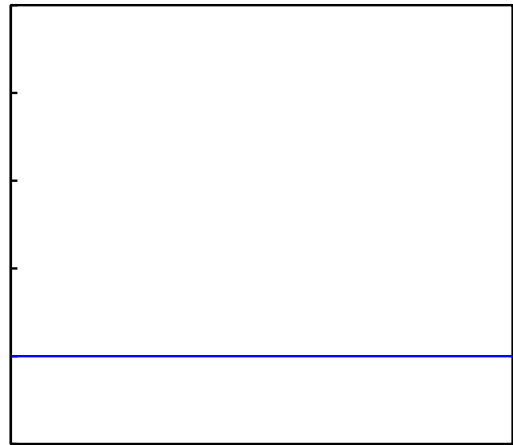
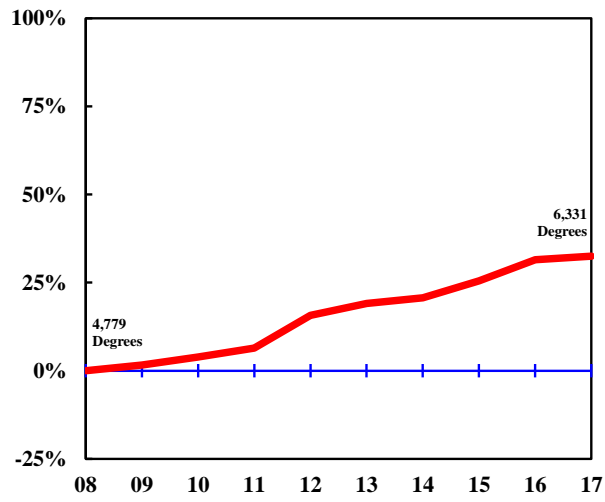


DEGREE	FY 2008	FY 2009	FY 2010	FY 2011	FY 2012	FY 2013	FY 2014	FY 2015	FY 2016	FY 2017	3-Year Average	5-Year Average	10-Year Average	Change in FY17 relative to the 10-Year Avg.
<b>UNIVERSITY OF MISSOURI - ST. LOUIS</b>														
Undergrad. Certificate						2	20	34	29	37	33.3	24.4	N/A	
Bachelors	2,016	2,018	2,011	2,092	1,963	1,974	2,020	2,246	2,252	2,071	2,189.7	2,112.6	2,066.3	0%
Graduate Certificate	64	80	82	71	96	88	80	87	116	123	108.7	98.8	88.7	39%
First Professional	38	44	41	44	47	40	39	41	45	43	43.0	41.6	42.2	2%
Masters	729	771	771	868	872	871	854	761	810	826	799.0	824.4	813.3	2%
Education Specialist	28	42	31	22	26	28	13	14	17	17	16.0	17.8	23.8	-29%
Doctorate	62	63	63	50	74	61	64	84	75	106	88.3	78.0	70.2	51%
Total, All Awards	2,937	3,018	2,999	3,147	3,078	3,064	3,090	3,267	3,344	3,223	3,278.0	3,197.6	3,116.7	3%

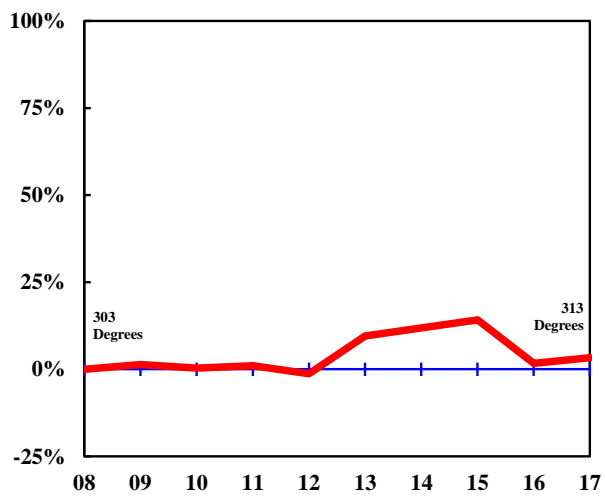




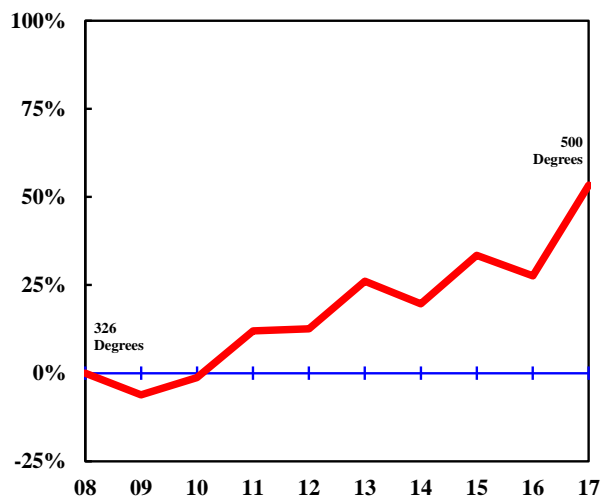
## Bachelor Degrees



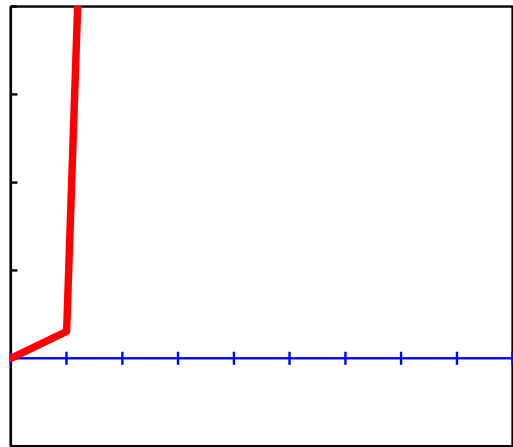
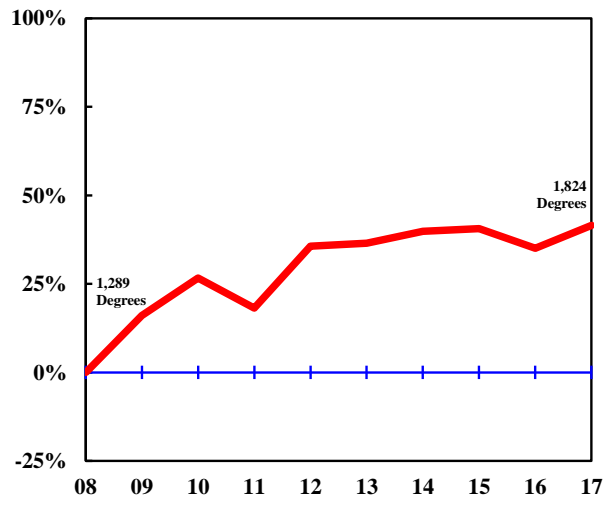
## 1st Professional Degrees



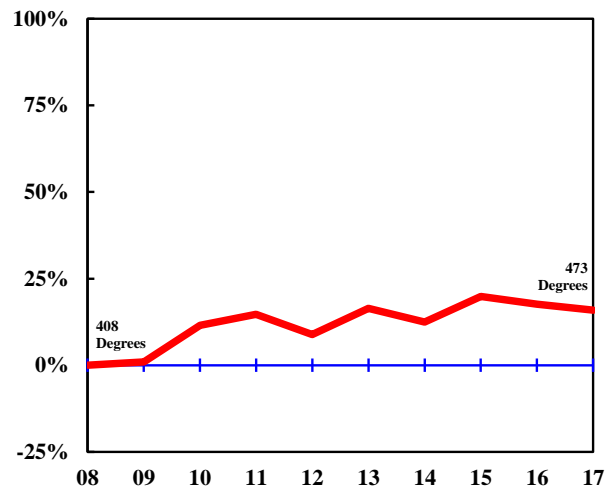
## Doctoral Degrees



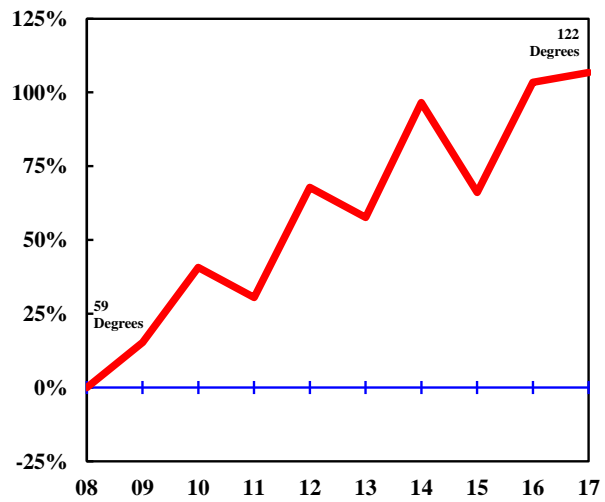
### Bachelor Degrees



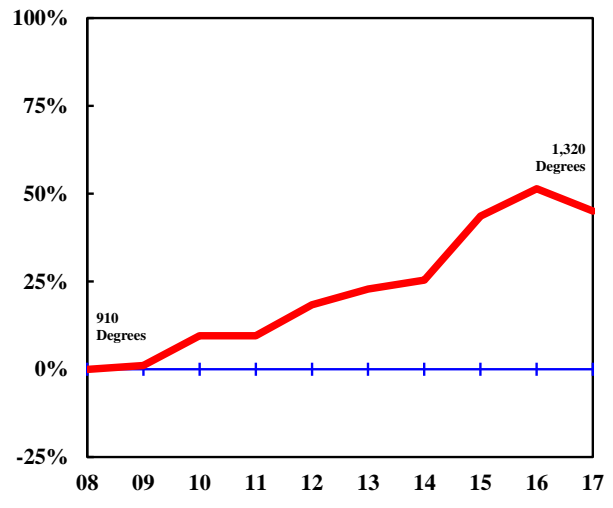
### 1st Professional Degrees



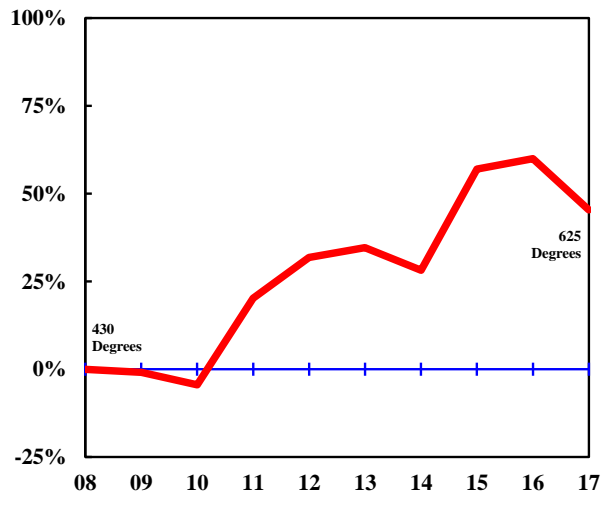
### Doctoral Degrees



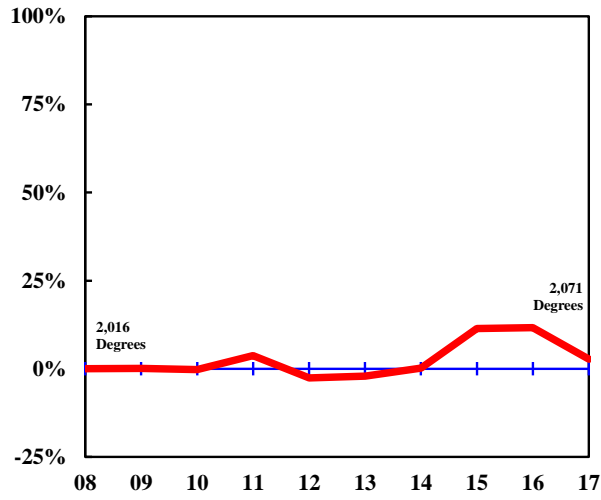
### Bachelor Degrees



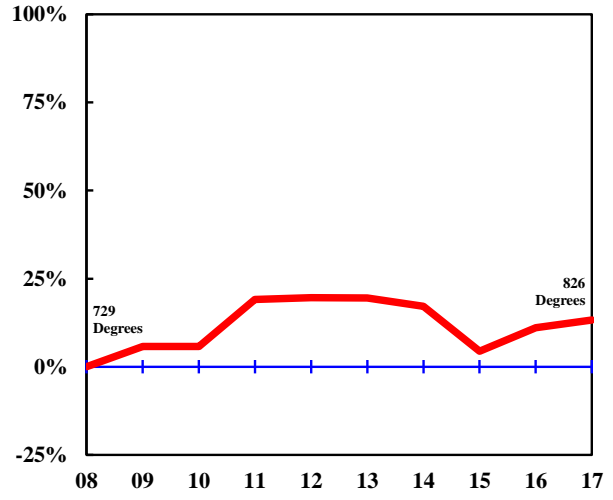
### Masters Degrees



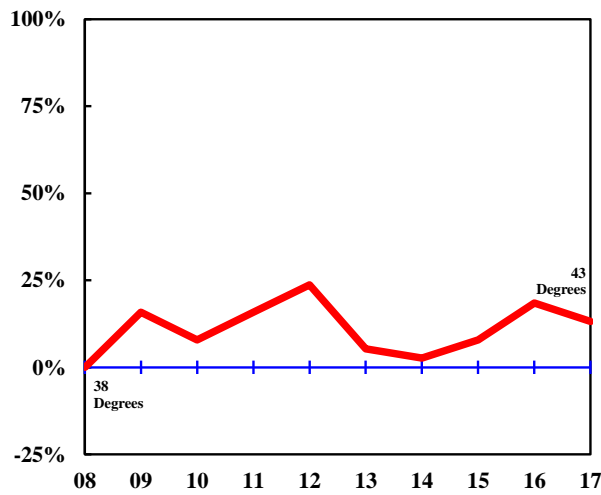
### Bachelor Degrees



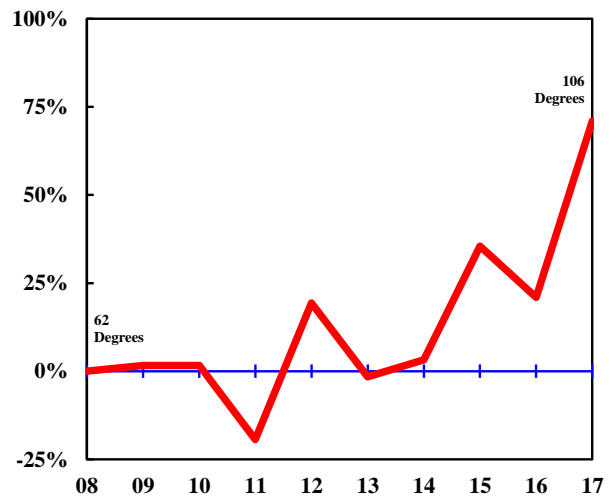
### Masters Degrees



### 1st Professional Degrees



### Doctoral Degrees



COLLEGE/DEGREE	FY 2008	FY 2009	FY 2010	FY 2011	FY 2012	FY 2013	FY 2014	FY 2015	FY 2016	FY 2017	3-Year	Average 5-Year	10-Year	Change in FY17 relative to the 10-Year Avg.
<b>AGRICULTURE, FOOD, AND NATURAL RESOURCES, COLLEGE OF</b>														
Bachelors	367	391	383	400	432	491	460	491	528	529	516.0	499.8	447.2	18%
Masters	46	51	38	45	51	44	68	38	63	47	49.3	52.0	49.1	-4%
Doctorate	26	32	28	27	24	34	35	33	28	40	33.7	34.0	30.7	30%
All	439	474	449	472	507	569	563	562	619	616	599.0	585.8	527.0	17%
<b>ARTS AND SCIENCE, COLLEGE OF</b>														
Bachelors	1,725	1,741	1,744	1,812	1,961	2,046	1,902	1,963	1,913	1,962	1,946.0	1,957.2	1,876.9	5%
Masters	158	176	144	176	169	168	209	197	182	179	186.0	187.0	175.8	2%
Doctorate	108	97	104	98	119	106	113	141	124	120	128.3	120.8	113.0	6%
All	1,991	2,014	1,992	2,086	2,249	2,320	2,224	2,301	2,219	2,261	2,260.3	2,265.0	2,165.7	4%
<b>BUSINESS, COLLEGE OF</b>														
Bachelors	807	779	900	838	824	786	785	776	829	939	848.0	823.0	826.3	14%
Grad. Certif.	30	9	15	27	23	21	24	25	19	38	27.3	25.4	23.1	65%
Masters	214	204	237	220	217	231	229	242	222	241	235.0	233.0	225.7	7%
Doctorate	6	6	4	6	10	8	8	5	11	6	7.3	7.6	7.0	-14%
All	1,057	998	1,156	1,091	1,074	1,046	1,046	1,048	1,081	1,224	1,117.7	1,089.0	1,082.1	13%
<b>EDUCATION, COLLEGE OF</b>														
Bachelors	249	246	239	246	274	284	305	280	307	227	271.3	280.6	265.7	-15%
Masters	450	485	502	495	532	464	418	464	457	480	467.0	456.6	474.7	1%
Ed. Specialist	34	57	59	53	43	63	65	82	51	56	63.0	63.4	56.3	-1%
Doctorate	87	87	74	84	79	117	73	83	74	102	86.3	89.8	86.0	19%
All	820	875	874	878	928	928	861	909	889	865	887.7	890.4	882.7	-2%
<b>ENGINEERING, COLLEGE OF</b>														
Bachelors	368	386	398	422	518	472	490	596	693	629	639.3	576.0	497.2	27%
Masters	93	90	78	109	100	120	131	165	136	157	152.7	141.8	117.9	33%
Doctorate	36	24	24	44	32	32	43	37	36	46	39.7	38.8	35.4	30%
All	497	500	500	575	650	624	664	798	865	832	831.7	756.6	650.5	28%
<b>HEALTH PROFESSIONS, SCHOOL OF</b>														
Bachelors	153	155	176	242	345	426	549	600	702	730	677.3	601.4	407.8	79%
Masters	96	82	48	40	55	51	58	60	54	66	60.0	57.8	61.0	8%
Doctorate	0	0	36	43	38	45	43	44	45	58	49.0	47.0	35.2	65%
All	249	237	260	325	438	522	650	704	801	854	786.3	706.2	504.0	69%

COLLEGE/DEGREE	FY 2008	FY 2009	FY 2010	FY 2011	FY 2012	FY 2013	FY 2014	FY 2015	FY 2016	FY 2017	3-Year	<u>Average</u> 5-Year	10-Year	Change in FY17 relative to the 10-Year Avg.
Bachelors	278	298	274	275	279	309	318	269	282	336	295.7	302.8	291.8	15%
Masters	18	35	17	30	34	28	26	41	38	36	38.3	33.8	30.3	19%
Doctorate	5	9	8	12	7	9	11	20	12	13	15.0	13.0	0.60.6	23%
All	301	342	299	317	320	346	355	330	332	385	349.0	349.6	332.7	16%
Bachelors	475	520	521	510	534	504	520	483	549	545	525.7	520.2	516.1	6%
Masters	91	107	112	88	111	73	91							





COLLEGE/DEGREE	FY	FY	FY	FY	FY	FY	FY	FY	FY	FY	3-Year	<u>Average</u>	10-Year	Change in FY17 relative to the 10-Year Avg.	
	2008	2009	2010	2011	2012	2013	2014	2015	2016	2017		5-Year			
U-Grad. Certif. Bachelors	713	829	931	813	934	877	895	844	766	872	827.3	850.8	847.4	N/A	N/A

-



COLLEGE/DEGREE	FY 2008	FY	FY	FY	FY	FY	FY	FY	FY	FY	<u>Average</u>	Change in FY17 relative to the
----------------	------------	----	----	----	----	----	----	----	----	----	----------------	-----------------------------------



COLLEGE/DEGREE	FY 2008	FY 2009	FY 2010	FY 2011	FY 2012	FY 2013	FY 2014	FY 2015	FY 2016	FY 2017	<u>Average</u>	Change in FY17 relative to the
											3-6	